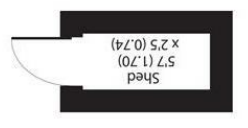
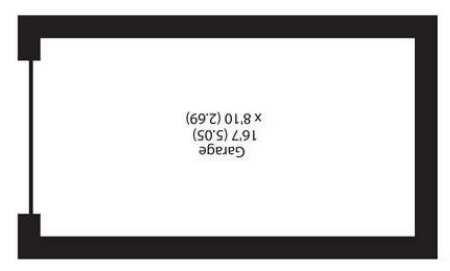
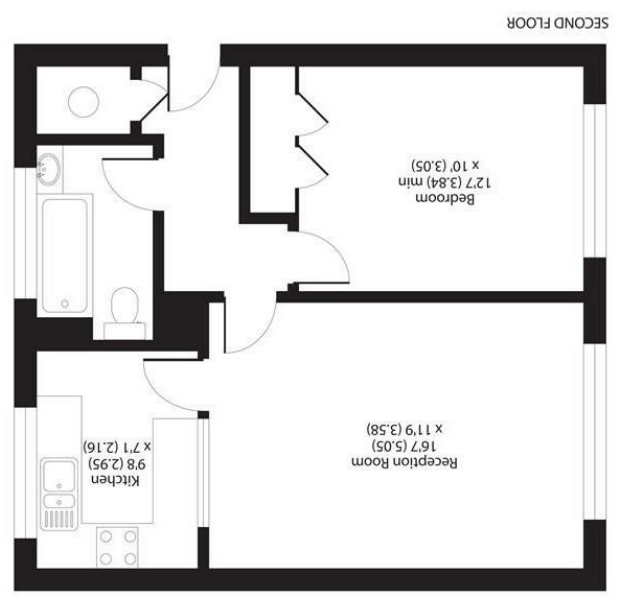


Important Information
 All appliances listed in these details are only 'as seen' and have not been tested by Gibson Lane, nor have we sought certification of warranty or service, unless otherwise stated. Measurements, areas and distances are approximate. Floor plans and photographs are for guidance purposes only and must not be relied upon for any purpose. These details are offered on the understanding that all negotiations are made through this company. Neither these particulars, nor verbal representations, form part of any offer or contract, and their accuracy cannot be guaranteed.

Energy Efficiency Rating		Environmental Impact (CO ₂) Rating	
Energy Efficiency Rating	77	Environmental Impact (CO ₂) Rating	C

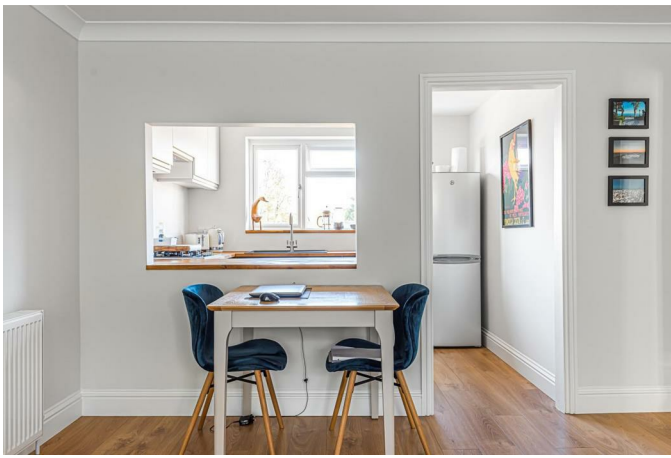


APPROX. GROSS INTERNAL FLOOR AREA 543 SQ FT 50.4 SQ METRES (EXCLUDES GARAGE & SHED)

34 Richmond Road
 Kingston upon Thames
 Surrey
 KT2 5ED
www.gibsonlane.co.uk
 Tel: 020 8546 5444



Queens Road
 Kingston Upon Thames KT2 7SE



Queens Road

Kingston Upon Thames KT2 7SE

Guide Price £320,000

An immaculately presented one bedroom flat within a short walk of Richmond Park, offered with long lease and a garage.

Description

A spacious and immaculately presented one double bedroom apartment situated on the third floor of this well managed block within close proximity of Norbiton Station and Richmond Park. The flat is also offered for sale with a private garage. Entered via well maintained communal areas, the internal accommodation has been completely modernized through out and comprises a large double bedroom with large built in wardrobe, bathroom with shower over bath, modern fitted kitchen and South facing lounge.

Situation

Queens Road is situated in this highly sought after North Kingston location within close proximity of Richmond Park. Conveniently positioned for Norbiton station giving direct access into Waterloo and the A3 which serves both London & the M25. Kingston town centre with its array of shops, restaurants and bars is a short distance away, as well as Kingston Hospital.

Tenure: Leasehold

Local Authority: Kingston Upon Thames

